

# CERTIFICATE OF LOCATION OF GOVERNMENT CORNER

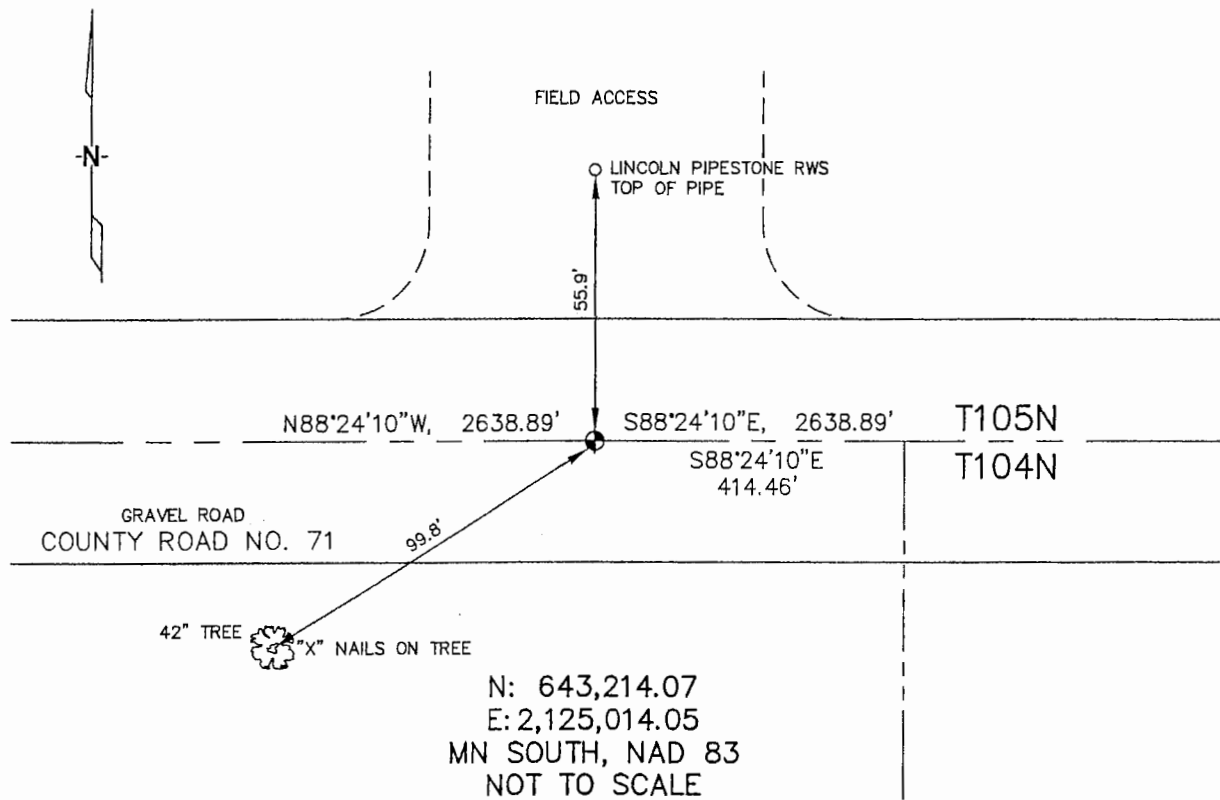
SOUTH 1/4 Corner of Section 33, Township 105, Range 42, 5TH P.M.

STATE OF MINNESOTA, County of MURRAY

At the corner location shown on the sketch :

- On \_\_\_\_\_ found \_\_\_\_\_
- left monument as found,  lowered monument,  removed monument (explain)
- On 2/24/2006 set 5/8" REBAR WITH CAP: RLS 44563 IN C/L OF GRAVEL ROAD EQUIDISTANT BETWEEN THE SW & SE CORNERS.

Sketch of reference ties



Statement of evidence relative to this corner location is on back page

I hereby certify that this document and the data contained herein was prepared by me or under my direct supervision.

Thomas V. Zeff 7/03/06  
 Thomas V. Zeff Date

Registration No. 44563

Land Surveyor,  Professional Engineer

County Surveyor,  County Engineer

OFFICE OF THE COUNTY RECORDER

County of \_\_\_\_\_

SEP 28 2006

I hereby certify that this document was filed in the Co. Recorders office at \_\_\_\_\_ .M. on the day of \_\_\_\_\_ A.D. , 20

County Recorder James R. Johnson  
 By \_\_\_\_\_, Deputy

DOCUMENT NO. \_\_\_\_\_

STATEMENT OF EVIDENCE:

SOUTH 1/4 CORNER, SECTION 33, T. 105 N., R. 42 W.,  
MURRAY COUNTY, MINNESOTA

- 1858 W.J. Niely, US. Deputy Surveyor, monumented south township line.
- ? Date Murray Co., placed a concrete stone.  
Ties: N-34.4' to tack in corner fence posts, on line;  
SW-46.8' to tack in gate post.
- 9/07/1971 Murray Co., found a concrete monument.  
Ties: N-58.34' to top, of steel post;  
SW-59.7' to nail & cap on post;  
SE-47.19' to nail & cap on post.
- 2/24/2006 Uiteig Engineers, Inc., Survey Crew, Brian Payne Party Chief,  
found nothing. Set a 5/8" rebar with cap: RLS 44563 in the C/L  
of the gravel road, equidistant between the SW & SE section corners.  
Ties: N-55.9' to top, pipe of Lincoln Pipestone RWS;  
W-2638.89' to SW corner, Section 33;  
E-2638.89' to SE corner, Section 33;  
E-414.46' to NE corner, Section 5, T104N.